

## The Phytochemical Epicatechin against the SARS-CoV-2 Main Protease

Annapura Sahoo, Ruplin Nayak, Shraban Kumar Sahoo, Pradip Kumar Prusty, Gagan Kumar Panigrahi\*

School of Applied Sciences, Centurion University of Technology and Management, Odisha, India

\*Corresponding Author: gagan.panigrahi@cutm.ac.in

### Abstract

2019 Novel corona-virus (2019-nCoV) also referred to as severe acute respiratory syndrome Corona-virus 2 (SARS-CoV-2) has put the entire globe into turbulence. Unavailability of specific drug against the virus is more essential. This demanding situation requires development of bio-molecules for efficient treatment against severe acute SARS-CoV-2. The crystal structure of SARS-CoV-2 main protease ( $M^{pro}$ ) can be used for fast *in silico* molecular docking. This may result into identification of pharmacophores including phytochemical. *In silico* molecular docking revealed that the phytochemical, Epicatechin effectively binds to the active pocket of the SARS-CoV-2 main protease.

**Keywords:** 2019-nCoV, SARS-CoV-2, SARS-CoV-2 main protease, Docking, Phytochemicals, Epicatechin.

### Introduction

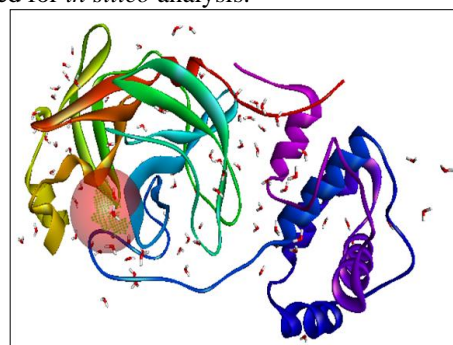
The pandemic situation caused due to the 2019-nCoV represents a severe public health calamity across the globe. The city of Wuhan was the epicentre where the outbreak of this human pathogen emerged, and resulted to human ailment, termed as COVID-19 [1, 2]. SARS-CoV-2 belongs to the beta corona-virus genus, closely related to the previously identified severe acute respiratory syndrome corona-virus (SARS-CoV) [3, 4]. Public Health Emergency of International Concern (PHEIC) was declared by the World Health Organization (WHO) owing to its fast rate of transmission within the humans [1, 5, 6]. Crystal structure of the SARS-CoV-2 main protease ( $M^{pro}$ ) proves to be an exceptional ground for screening specific ligands [7]. SARS-CoV-2 main protease can be beleaguered for developing antibodies, diagnostics and vaccines. Reportedly,  $M^{pro}$  and other known viral proteins are defining features paving the path of virus from entry to infection in the host cell [8, 9, 10]. Moreover,  $M^{pro}$  can also be an effectual target to diminish the viral replications within the host cells since it facilitates the synthesis of functional viral proteins. The effectiveness of traditional medications on the restriction of COVID-19 growth does not have any scientific back up as of now, since the underlying molecular mechanisms are unclear. The phytochemicals are fundamentally bioactive compounds and has the potential to amend cellular physiology. Here, we report that epicatechin, a phytochemical mostly enriched in some selected plants binds into the active site of the SARS-CoV-2 main protease as revealed by the *in silico* molecular docking and thus further studies may reveal the effectiveness of epicatechin to be used as COVID-19 therapeutics.

### Methods

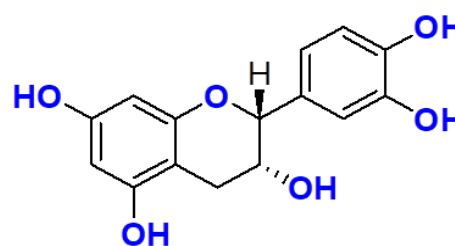
#### Viral Protein Structure and Phytochemical dataset collection

The 3D structure of  $M^{pro}$  was accessed from Protein Data Bank accession 6M03 (Fig. 1). The SDF accession CHEBI:90 corresponding to the epicatechin (Fig. 2) was

obtained and consequently both the protein and the ligands were used for *in silico* analysis.



**Fig 1:** 3-D Structure of the SARS-CoV-2  $M^{pro}$  showing the active site of the protein.



**Fig 2:** Chemical structure of Epicatechin

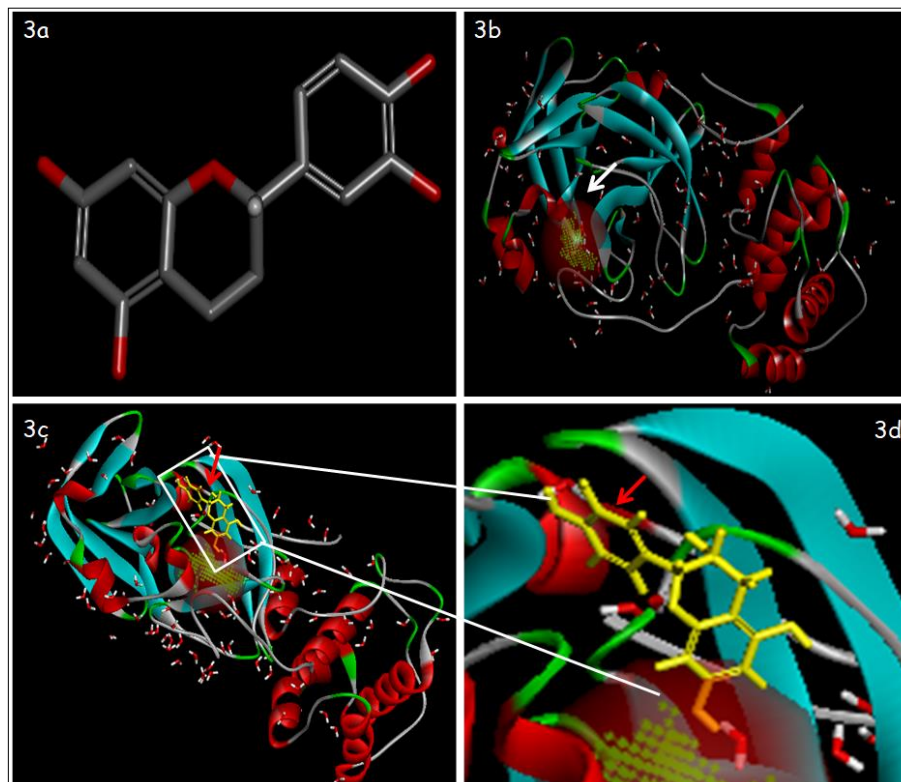
#### Molecular docking

For the *in silico* molecular docking, BIOVIA's Discovery Studio docking method was used [11]. The catalytic pocket of the  $M^{pro}$  protein was specified and targeted for binding of the ligand. CDOCKER Energy and CDOCKER Interaction Energy signify the affinity of the ligands with the protein receptors. Basically, high positive values of the CDOCKER Energy, CDOCKER Interaction Energy and a diminutive difference between the CDOCKER Energy and CDOCKER Interaction Energy are considered to be the most favourable [12].

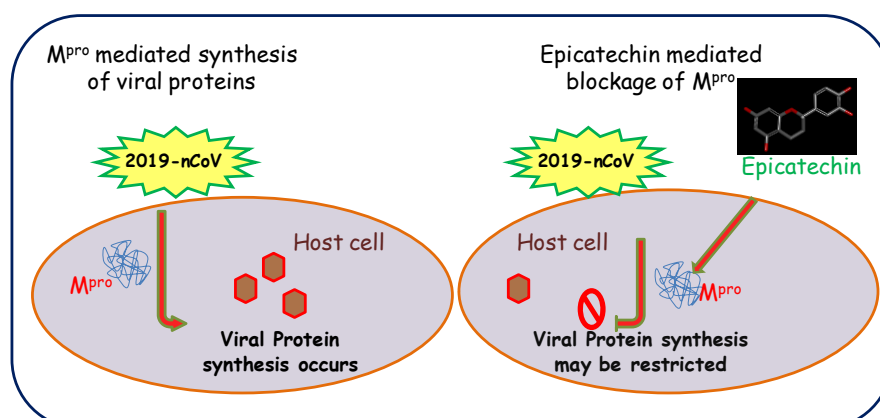
## Results and Discussion

It was found that epicatechin specifically binds to the active pocket of the SARS-CoV-2 M<sup>pro</sup> (Fig. 3), as apparent from higher CDOCKER energy and CDOCKER interaction

energy (Table 1). Since, simple active bio molecule like epicatechin effectively binds into the active pocket of the M<sup>pro</sup> under *in silico* conditions it is quite possible to design pharmacophore molecules based on the structural and functional identity of epicatechin and eventually can be used in the pharmaceutical sector. Chemical synthesis of epicatechin can be cost effective as compared to the isolation process from specific plants.



**Fig 3:** The active site of the SARS-CoV-2 main protease (M<sup>pro</sup>) interacts with Epicatechin. **3a:** Phytochemical, Epicatechin. **3b:** Free form of M<sup>pro</sup>. **3c:** M<sup>pro</sup> associated with the ligand, Epicatechin. **3d:** Magnified image showing the association of the Epicatechin with the M<sup>pro</sup>. (The white colored arrow and the red colored arrow indicate the active site of the M<sup>pro</sup> and binding of Epicatechin respectively).



**Fig. 4:** Epicatechin, a phytochemical may inhibit COVID-19 M<sup>pro</sup> and thus restrict the synthesis of viral proteins.

**Table 1:** CDocker energy and CDocker interaction energy values generated for the interaction of Epicatechin with the active site of SARS-CoV-2 main protease (M<sup>pro</sup>).

Ligand		Receptor			Interaction status	
SDF Accession	Phytochemical	Protein	PDB Accession	Docking Result	CDocker Energy	CDocker Interaction Energy
CHEBI: 90	Epicatechin	Covid-19 Main protease	6M03	Positive	-17.35	-21.04

### Conclusion and Future perspectives

The current *in silico* molecular docking-based study reveals that epicatechin can target the reported SARS-CoV-2 M<sup>pro</sup> (Fig. 4). It would be extremely noteworthy being confirmed *in vivo*. It is crucial to develop diagnostic tools, potential therapeutics and antibodies selectively for the COVID-19 proteins. Phytochemicals like epicatechin is commercially available and thus may be effectively prescribed to circumvent the current global scenario. Essentially, this study makes an attempt to reveal simple phytochemicals like epicatechin which can be employed for designing novel therapeutics.

### Author contribution statement

GKP conceived the idea. AS, GKP, RN, SKS, PKP performed the experiments. GKP analyzed the data. All authors have significant contribution in drafting the manuscript.

### Funding

The present study was financially supported by Centurion University of Technology and Management, Odisha, India.

### Acknowledgements

Authors are thankful to the administration and management of Centurion University of Technology and Management, Odisha, India for providing necessary facilities to conduct the experiment.

### Conflict of interest

The authors declare that they have no conflict of interest.

### References

1. Chen N, Zhou M, Dong X, *et al.* Epidemiological and clinical characteristics of 99 cases of 2019 novel coronavirus pneumonia in Wuhan, China: a descriptive study. *Lancet*, 2020; 395:507-513.
2. Huang C, Wang Y, Li X, *et al.* Clinical features of patients infected with 2019 novel coronavirus in Wuhan, China. *Lancet*, 2020; 395:497-506. [https://doi.org/10.1016/S0140-6736\(20\)30183-5](https://doi.org/10.1016/S0140-6736(20)30183-5).
3. Lu R, Zhao X, Li J, *et al.* 2020. Genomic characterisation and epidemiology of novel coronavirus: implications for virus origins and receptor binding. *Lancet*, 2019; 395:565-574.
4. Wu F, Zhao S, Yu B, *et al.* A new coronavirus associated with human respiratory disease in China. *Nature*, 2020; 579:265-269.
5. Chan JFW, Yuan S, Kok KH, *et al.* A familial cluster of pneumonia associated with the 2019 novel coronavirus indicating person-to-person transmission: a study of a family cluster. *Lancet*, 2020; 395:514-523.
6. Li Q, Guan X, Wu P, *et al.* Early Transmission Dynamics in Wuhan, China, of Novel Coronavirus-Infected Pneumonia. *N Engl J Med*, 2020, 1-9.
7. Liu W, Morse JS, Lalonde T, Xu S. Learning from the Past: Possible Urgent Prevention and Treatment Options for Severe Acute Respiratory Infections Caused by 2019- nCoV. *Chem Bio Chem*, 2020, 730-738.
8. Wrapp D, Wang N, Corbett KS, *et al.* 2020. Cryo-EM structure of the -nCoV spike in the prefusion conformation. *Science*, 2019; 1263:1260-1263.
9. Lung Jrhau, Yu-Shih Lin, Yao-Hsu Yang, *et al.* The potential chemical structure of anti-SARS-CoV-2 RNA-dependent RNA polymerase. *J Med Virol*, 2020, 0-1.
10. Ton AT, Gentile F, Hsing M, *et al.* Rapid Identification of Potential Inhibitors of SARS- CoV-2 Main Protease by Deep Docking of 1.3 Billion Compounds. *Mol Inform*, 2020, 1-18.
11. Dassault Systèmes BIOVIA, DISCOVERY STUDIO, San Diego: Dassault Systèmes, 2020.
12. Panigrahi Gagan Kumar, Sahoo Shrabhan Kumar and Satapathy Kunja Bihari. In silico Molecular Docking-Based Screening of Phytochemicals Targeted against Glypican-1. *IJONS*. 2020; 59(10):18708-18712.